

# TSL2772 EVM

## Quick Start Guide



Figure 1: TSL2772 EVM Kit (shown)

### OUT OF THE BOX

Each TSL2772 EVM comes with the following components:

- Controller board v2.1
- TSL2772 Daughterboard
- USB Cable with A connector and mini B connector
- Flash Drive with Application Software and Documents
- Quick Start Guide (not shown)

### SOFTWARE INSTALLATION

Most PCs should have one or more Universal Serial Bus (USB) ports. Install the TAOS flash drive into an unused USB port.

1. Double-click the **Setup.exe** file on the flash drive, or
2. Click Start -> Click Run -> Type E: setup.exe and press Enter. IMPORTANT: Use the appropriate drive letter in the above command to install the software. Flash Drive will commonly be assigned the next available drive letter for example C: hard drive D: CD-ROM E: flash drive

The Digital Light Sensor Setup Wizard will open and guide you through the installation of the TSL2772 host software. (Figures 2 through 8). To re-install, run the setup.exe file again. To remove the software from your computer, Select ams -> TSL2772 EVM -> Uninstall TSL2772 EVM or use the Windows Control Panel (Figure 9).

### Connect Hardware

Plug the TSL2772 Daughterboard into the Controller board. (Figure 1) Always use ESD procedures when handling the EVM.

Using the enclosed USB cable, plug the mini-B connector into the EVM module. Using the other end of the cable, plug the USB A-connector into a USB port on the computer.

### Start Application

Click the Digital Light Sensors icon on the desktop.

### Contact and Support

For detail in using the TSL2772 EVM please refer to the User's Guide included in the documents.

If any technical difficulties are encountered, use the Tech Support page at [www.ams.com/Support](http://www.ams.com/Support) to submit a technical support request anytime or call (972) 673-0759 (main) M-F 8AM-5PM CST

You may also use [www.ams.com](http://www.ams.com) to find worldwide local representatives in your area.

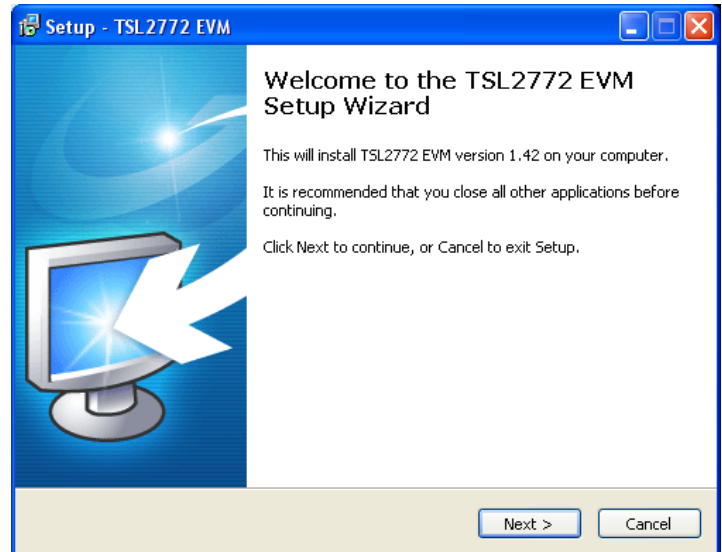


Figure 2: Welcome Screen

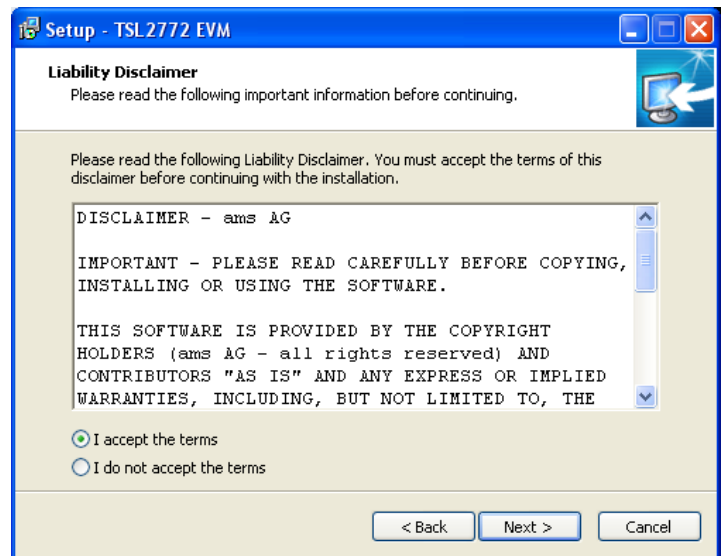


Figure 3: Liability Disclaimer

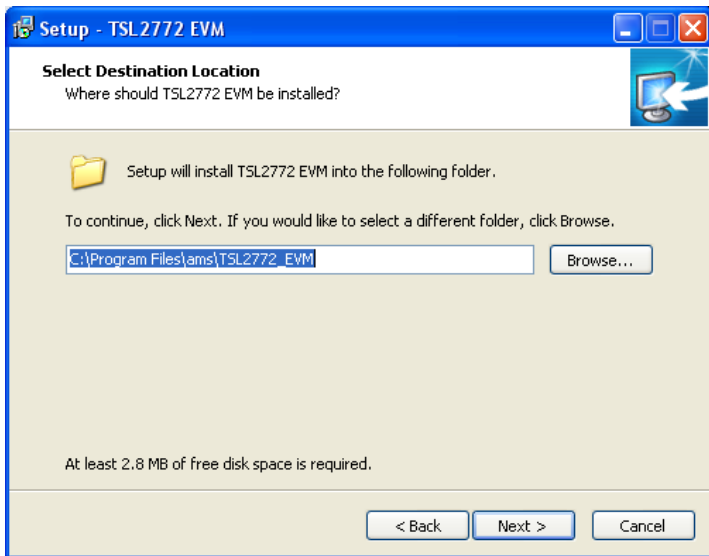


Figure 4: Select Installation Folder

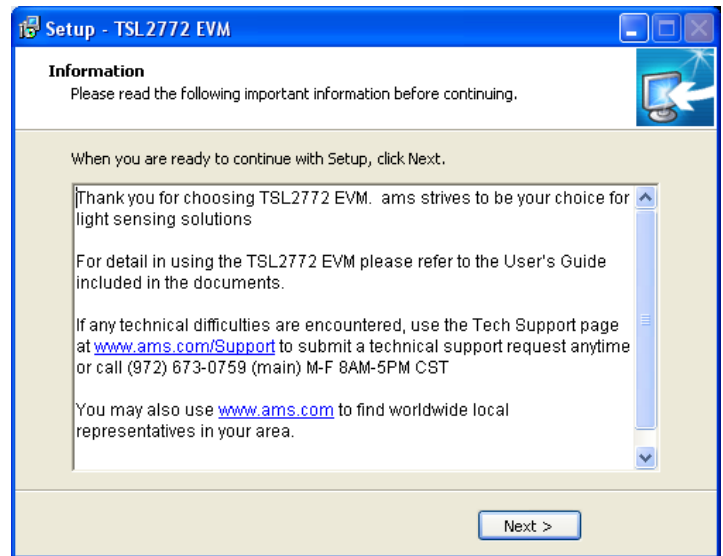


Figure 7: Thank You Screen

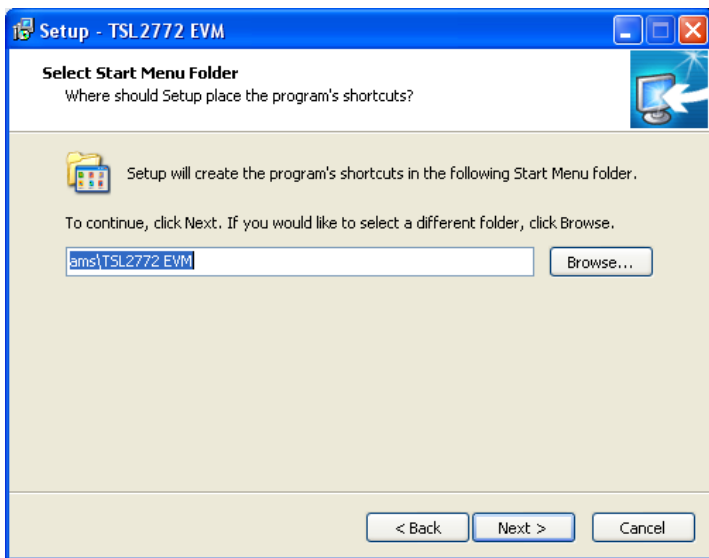


Figure 5: Select Start Menu Folder

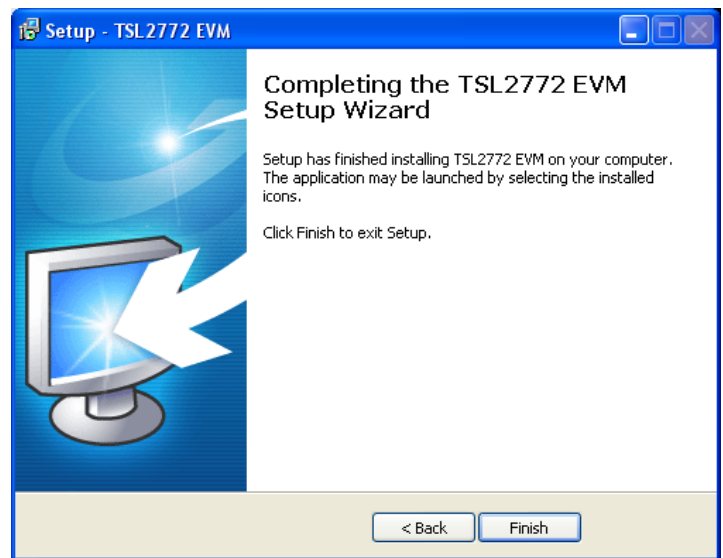


Figure 8: Installation Completed Successfully

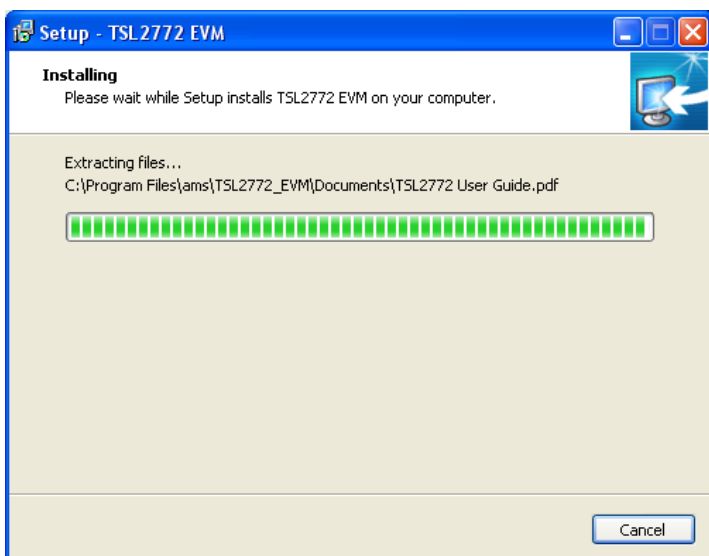


Figure 6: Installation in Progress

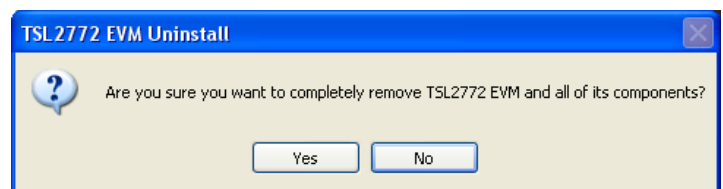


Figure 9: Remove Installation